

## PRIVATE LABEL PROGRAM - 5 oz. Bottle

The size of the label is 5½” x 2¾”. WE NEED 1¼” at the right hand edge of the label to take care of all the legal statements. This leaves YOU 4¼” to be creative! The PDP (principal display panel) will need to have the net weight stated at the bottom or along the right edge of your panel. Other than that you’re free to go wild.

Our design team can take your submitted ideas, logo and background image and create a label that truly reflects your business.

Caution: the more you play the more you pay. We’re talking about revisions here. Try to have a good idea of what you would like to see and say at the beginning. Our graphics staff will do their best to add ideas or design elements if you need a little help.

### What we’ll need to get started:

- The company logo in a high resolution format; .eps, .ai, .pdf, .psd or .tif format. This is the same if you submit background images.
- A name for your sauce. Buckin’ Hot Sauce was one that Smokin’ Moe’s in Winter Park came up with. It just fit with the theme!

- We need to list your establishment name, address and telephone number in with our ingredient statement. You can add a web listing in this area also as further promotion for your business.

Depending on the quantity of labels you will order for future shipments of the branded sauce, we will produce labels with top quality digital equipment to match your needs.

If you plan on placing the bottles out on your tables, we can use a shrink material or over laminate to keep your bottles looking nice!

Establishment name: \_\_\_\_\_

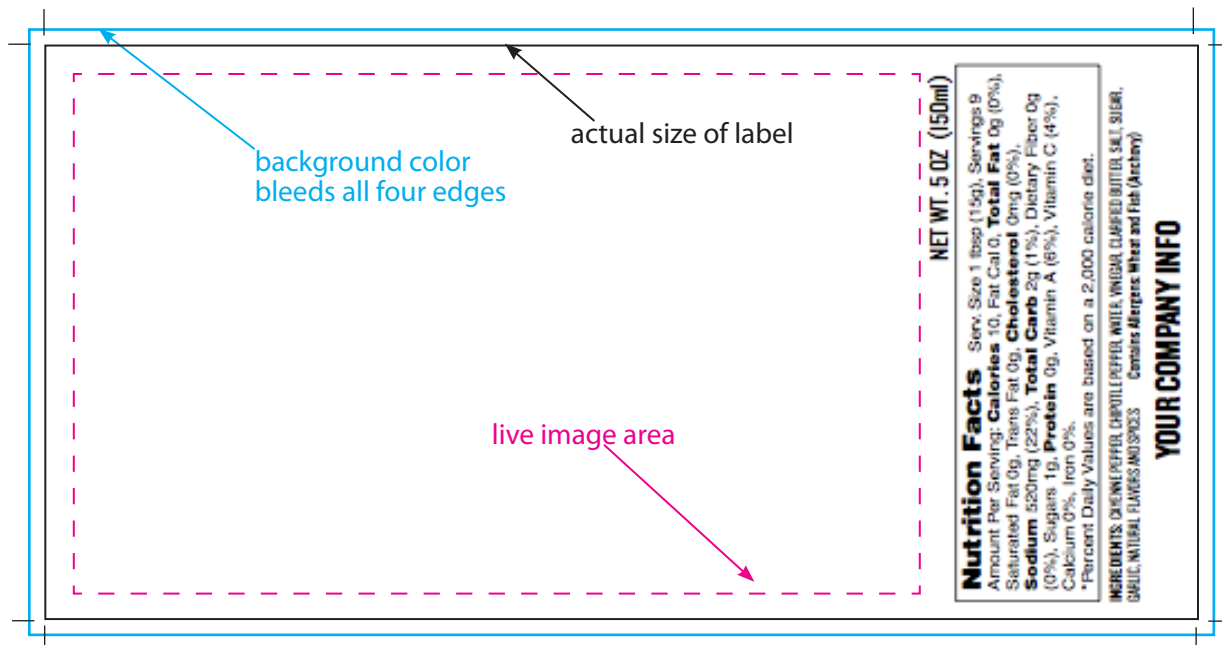
Address: \_\_\_\_\_

Tel #: \_\_\_\_\_

Web address: \_\_\_\_\_

Name of Sauce: \_\_\_\_\_

Logo submitted to: [paul@captainspongefoot.com](mailto:paul@captainspongefoot.com)



If you have additional questions or would like to submit and inquiry you can fill in the form on the CSTC web page under private labels or call 303-367-0167.